

VCH Professional Practice

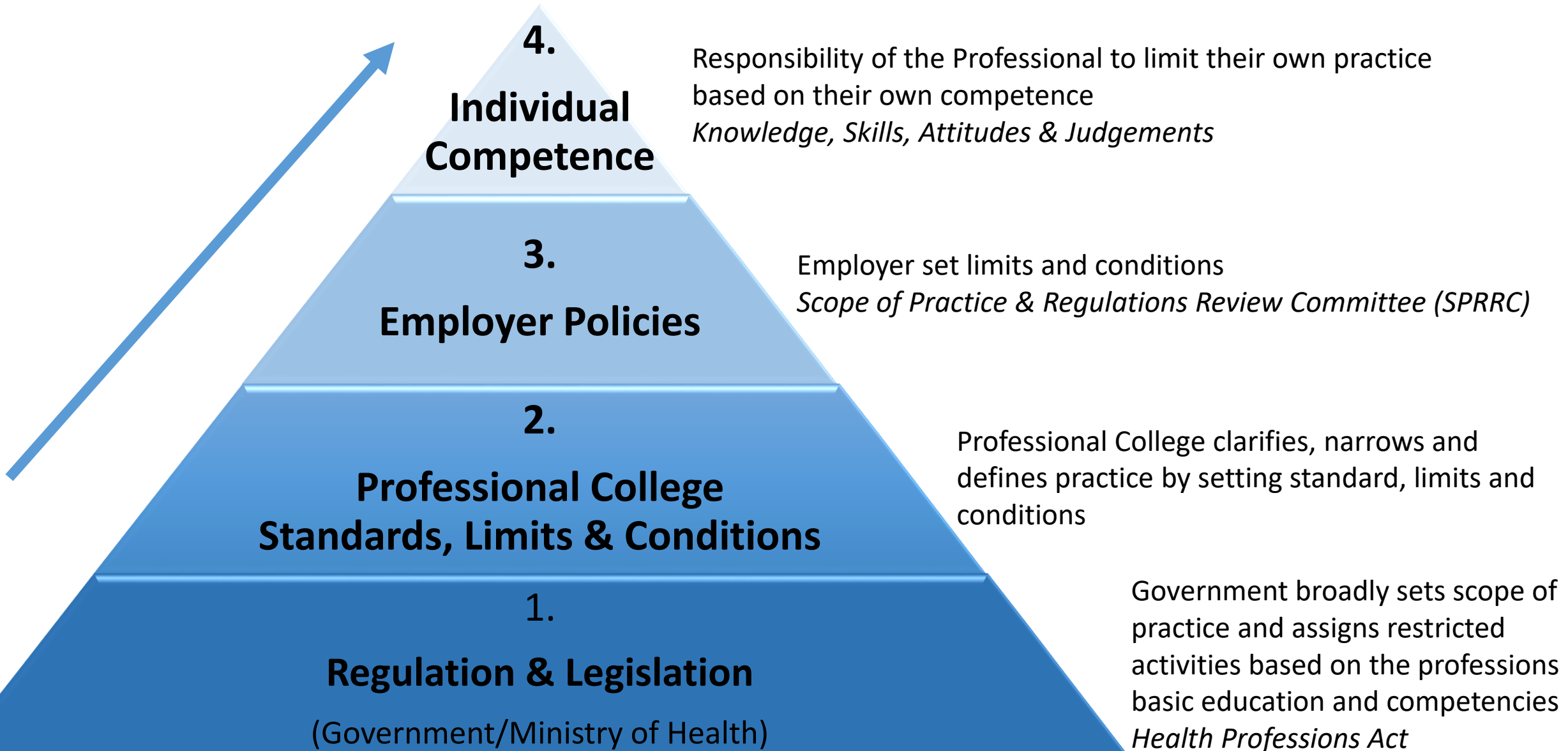


Best Practice. Best Care.

Common Professional Practice Work



Controls on Practice



VCH Professional Practice

Our Values



We Care for Everyone

We believe being caring is at the heart of what we do, caring for our patients, their families, our colleagues, and ourselves.



We Are Always Learning

We believe in staying curious, always open to innovative ideas and ways to improve health care.



We Strive for Better Results

We believe in achieving better results across all functions of health care leading to better patient outcomes and improving health care.

Professional Practice – Nursing Roles

Practice Initiatives Lead

Provides leadership and expert consultative advice on

- nursing practice issues,
- scope of practice,
- clinical informatics,
- resource planning
- research to enhance the practice environments and achieve effective and efficient quality of care.
- Supports nurses to integrate evidence-based practice in the delivery of quality care/services.
- Supports practice resource development (DST/guidelines)

Regional Clinical Educator

- Ensures the overall success of educational program implementation and delivery across the organization,
- Reviews and monitors policies, procedures, and standards relating to educational activities.
- Administers, promotes and oversees the ongoing development of Clinical Educators to promote quality learning environments across the organization to support the education needs of clinical staff.
- I think we can add more to this. I will find the document we created when I first started my role, it outlines the RCE and unit CNE roles

Bonnie suggests – adding in CNE how it differs from RCE

Professional Practice – Allied Health Roles

Practice (Initiatives) Lead

Supports Nurses/Allied Health to integrate evidence-based practice in the delivery of quality care/services

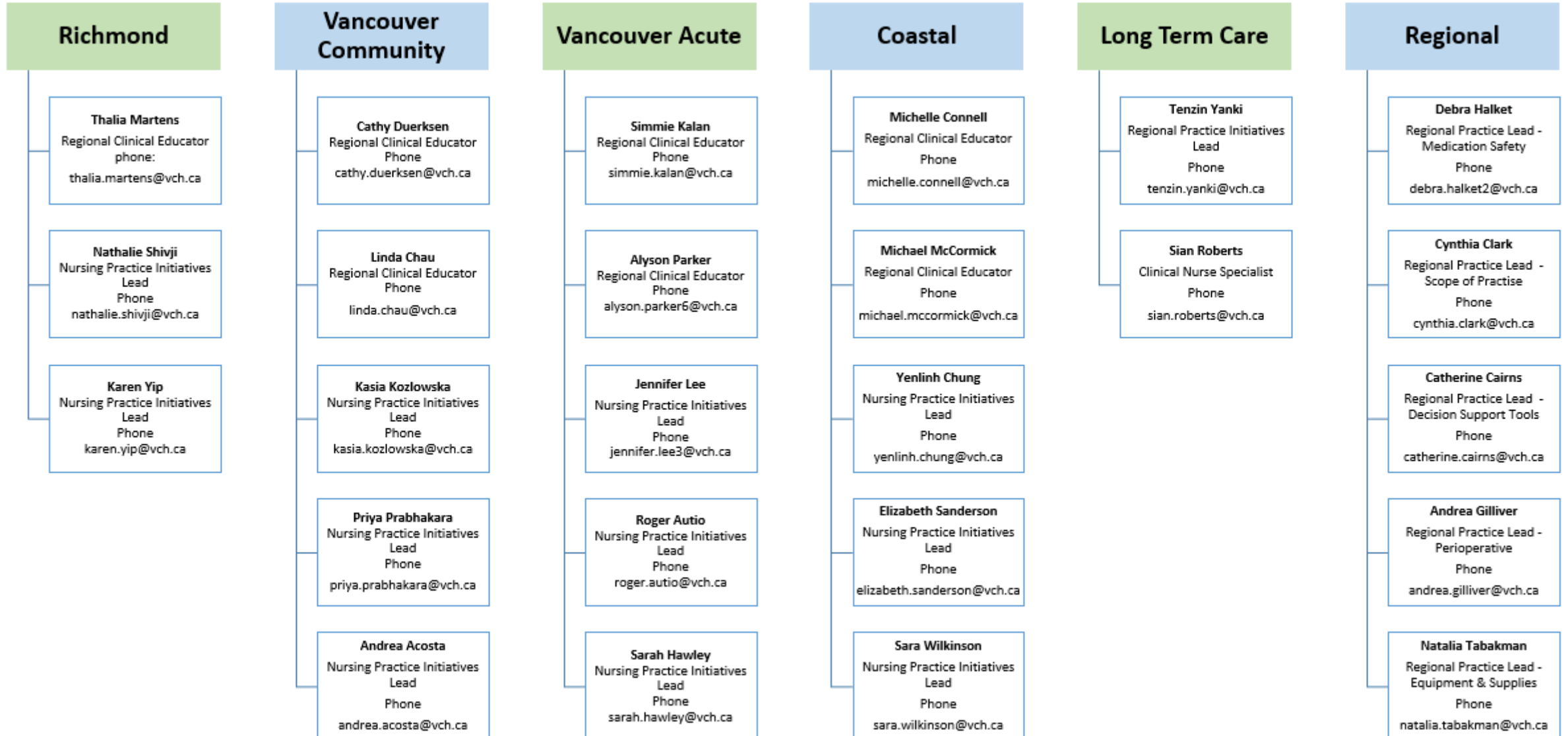
Provides leadership and expert consultative advice on

- nursing/allied health matters,
- scope of practice, **job duties**,
- clinical informatics,
- resource planning,
- research **and knowledge translation**
 - to enhance the practice environments and achieve effective and efficient quality of care.

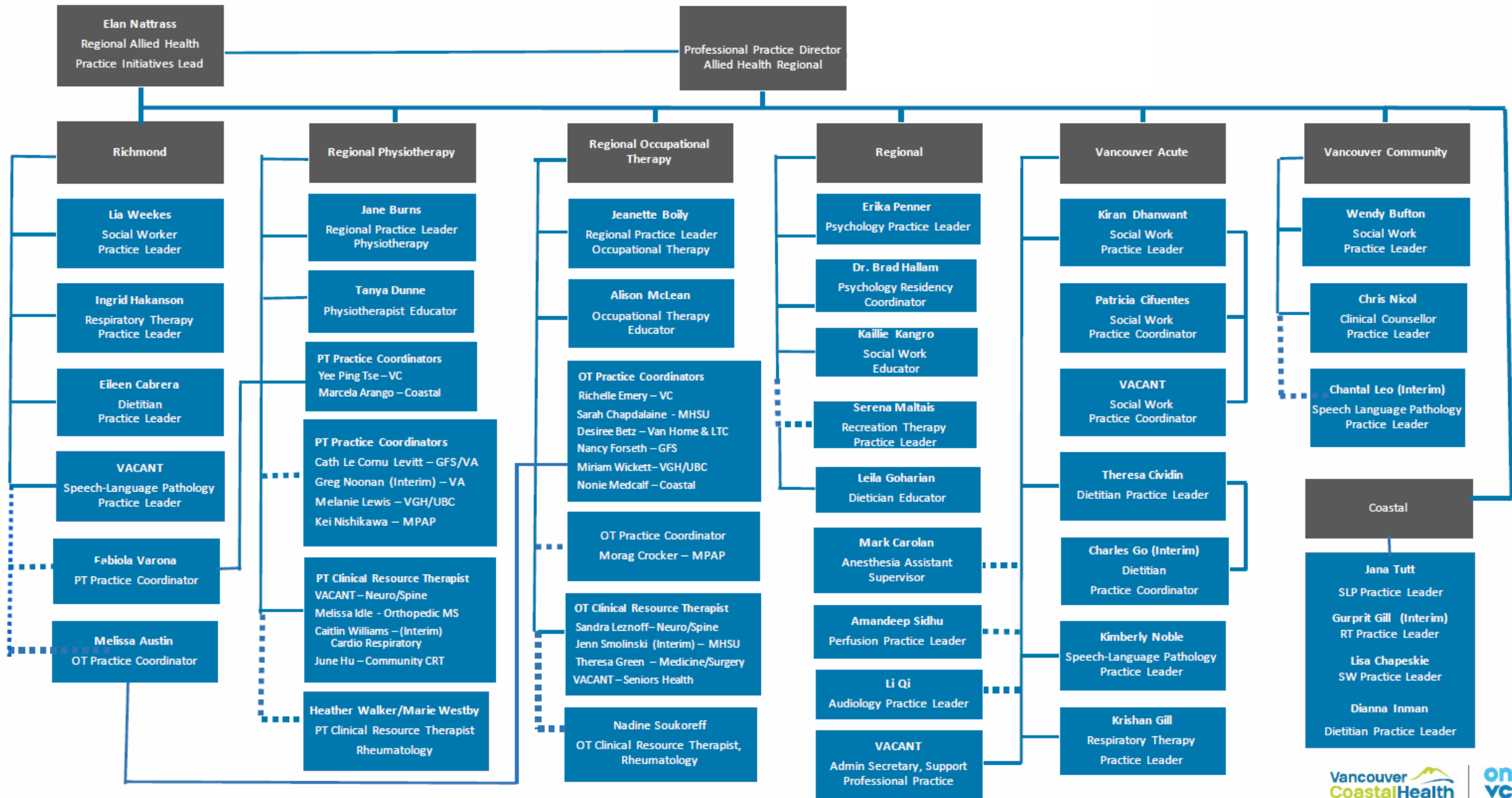
Regional Clinical Educator

- Performs needs assessments and **provides input** on regional education strategy
- Develops regional educational programs
- Monitors educational program delivery and implementation
- Reviews and tracks policies, procedures, and decision support tools, relating to care competencies and organizational priorities.
- Administers, promotes and oversees the ongoing development of Clinical Educators to promote quality learning environments across the organization to support the education needs of clinical staff.

Professional Practice & Educator – Nursing Contacts



VCH Professional Practice Allied Health January 28, 2022



Each COC Professional Practice & Educator team is structured slightly differently



please reach out to your COC lead for questions and support